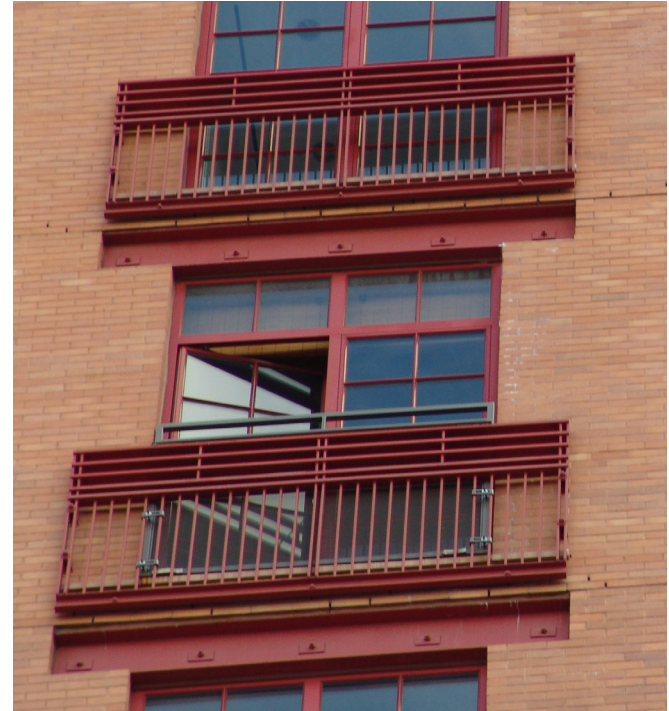


# Thermo Roll Terrace Doors (In-Swing & Out-Swing)

**Designed for Areas with High Stress, Heavy Air and Water Infiltration with Twelve (12) Locking Points**

## Standards

- Decorative beveled glazing bead for a contemporary streamline design.
- Optional forth hinge for added support on over-sized doors.
- All frames and door sashes have a thermal barrier which eliminates transfer of outside cold to the door interior.
- Heavy-duty hinges, fully adjustable for tighter seals.
- Multi-lock hardware available for added security.
- Hardware available in standard color, White, Bronze and Silver paint. (brass plate handle)
- Spring latch to position locking every time.
- 1" threshold for a lower profile which will eliminate tripping hazards when entering or exiting from door.
- Glazing ¼" thru 1" glazing available in tempered glass with optional low "E".



Model Number	Test Size	Rating	Air Infiltration	Water	Uniform
TRS-6207 (opens in)	61x97	OA-HGO-HC65	25.75 PSF	15.25 PSF	97.5 PSF
TRS-7008 (opens out)	61x97	ADTHC100	12.0 PSF	60.0 PSF	150.0 PSF
TRS-8000 (opens in/out)	41x91	SWD-HC75	25.0 PSF	20.0 PSF	100.0 PSF



**THERMOROLL**  
WINDOW MANUFACTURING

77 Bennington, Freeport, NY 11520  
800-945-2545 • Fax: 631-643-3559 • www.thermoroll.com